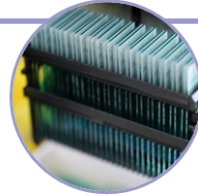
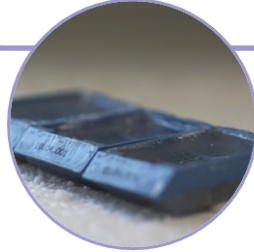


HISTOLOGICAL SERVICES

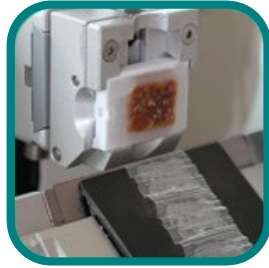
by HISTALIM



If you don't have the means to make yourself your technical works in histology, or if you need to use the services of a subcontractor to unload your own technical platform, HISTALIM will be able to adapt to the specific characteristics of the tissues you want to process

Upstream of each project, we define with you written specifications which detail each protocol you want to achieve. Thus, following this protocol literally, HISTALIM's technical team will handle your samples optimally with as much care and attention as if you had done this work on your own.

PARAFFIN & CRYOSECTION



Paraffin embedding & Microtomy

Paraffin sections are often chosen by customers concerned to preserve the best tissue morphology. They are also compatible with most of the staining or labeling protocols.

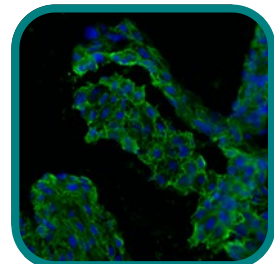
HISTALIM proposes different impregnation protocols which have been validated to be adjusted to the size and the nature of the samples. The inclusion is made to respect the impact of sectioning expected by our clients, as defined in the specifications.

Our technicians carry out the microtome sections according to your recommendations (thickness, number of sections by block, spacing between cuts,...).

Cryotomy

Frozen sections have some advantages that the paraffin sections do not offer: Freezing allows an optimal conservation of DNA and RNA. Furthermore, certain proteins which epitopes are distorted by the action of formalin should be processed by freezing to be labeled in immunohistochemistry. Finally, some soluble elements can only be labeled or stained using a freezing technique.

To adapt to the objectives of each study, HISTALIM has at its disposal these two techniques. Do not hesitate to contact us for advices in order to make the best choice.



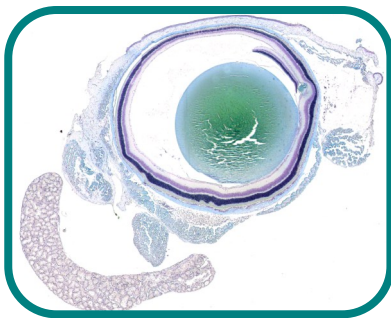
Staining

Our standardized staining protocols are performed using automata that guarantee a constant quality. Each dye has a fixed life span and then we can maintain a flawless tinctorial affinity.

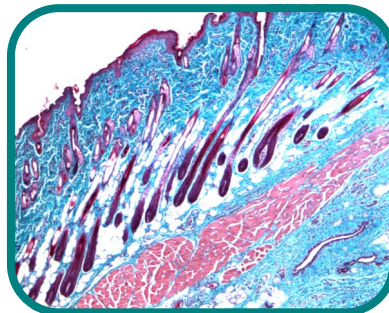
For immunolabellings and In Situ hybridization, see our other brochure.

Available stainings

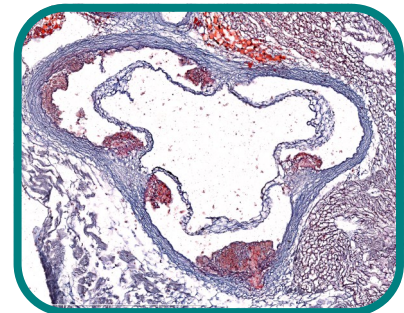
- Hematoxylin Eosin
- Hematoxylin Eosin Saffron
- Cresyl Violet
- Congo red
- Kluver Barrera
- May-Grünwald Giemsa
- Calleja
- Masson's Trichrome
- Alcian blue
- Sirius Red
- Alizarine Red
- O Red Oil
- ...etc.



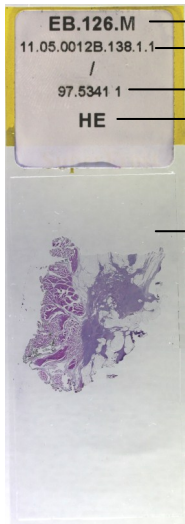
Mouse eye (Calleja)



Rat skin (Masson's Trichrome)



Mouse aorta (O Red Oil)



EB.126.M — n° of assay
11.05.0012B.138.1.1 — n° of sample
/ —
97.5341 1 — Client n° of study
HE — Staining type

Printed tracability datas for a perfect clarity

- Automated dry coverslipping
- ⇒ Long-term preservation
 - ⇒ No air bubbles
 - ⇒ High quality slides
 - ⇒ Constant flatness (ideal for image processing)

Slide control

Slides are controlled under a microscope. The control criteria are:

- Absence of streaking, overlay or contamination
- Homogeneity of staining,
- Good tinctorial affinity
- Absence of micro-bubbles.

A document embodying all of the follow-up works is then edited, validated, and attached to the slides that are shipped by carrier.

HISTALIM is also able to carry for you:

- Histological blocks manufacturing
- Blank slides you can label by yourself
- Coloration of your blank slides
- Rolled sections in micro-tubes
- ...

See also our brochures:

- Protocol validation
- Immunohistochemistry/In Situ hybridization
- Slide digitization
- Image processing
- Histopathological examination

HISTALIM